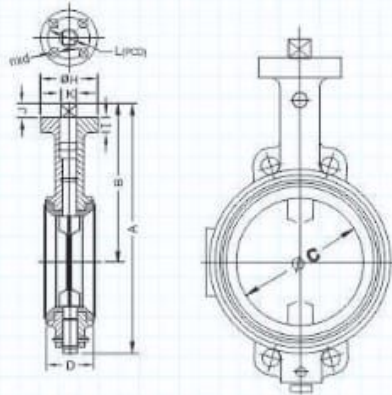
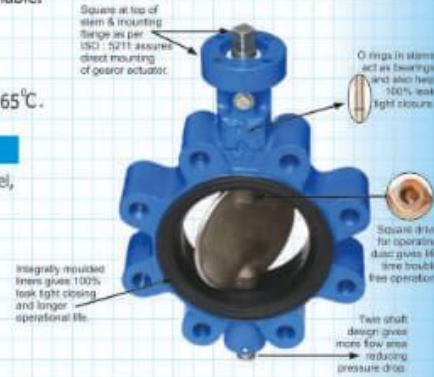


KARTAR butterfly valves, a product of KARTAR VALVES PVT. LTD., among the Indian leaders in fluid handling with experience of 42 years in the valves. These valves are a result of continuous research & development and now we have a unique user friendly design with features like :

- ♦ Integrally moulded liner to give accuracy / replaceable also available.
- ♦ Unique Elastomer formula provides self lubrication qualities.
- ♦ Standard Mounting Flange as per ISO 5211.
- ♦ Dn 40 to Dn 600 in Pn 1.0 & Pn 1.6 temperature range -10° C to 65°C.

Components	Material
Body	Cast Iron, SG Iron (Ductile), Cast Carbon Steel, Stainless Steel
Disc	SG Iron (Ductile), Stainless Steel
Liner	Nitrile, Neoprene, EPDM, Silicon
Upper & Lower Stem	Stainless Steel AISI 410, AISI 304
Bushing	Teflon or Nylon
O Rings	Nitrile, Silicon, Viton



Nominal Dia	40	50	65	80	100	125	150	200	250	300	350	400	450	500	600
	1-1/2"	2"	2-1/2"	3"	4"	5"	6"	8"	10"	12"	14"	16"	18"	20"	24"
A	205	233	251	262	286	329	358	434	545	593	670	730	743	985	1090
B	133	154	164	168	180	193	207	276	306	331	393	409	434	595	640
C	38	49	63	79	103	125	154	201	253	300	357	385	437	473	573
D (± 2)	32	42	44	44	50	56	56	60	68	78	92	102	114	127	154
H	65	65	65	65	65	90	90	90	125	125	175	175	175	210	210
I	14	17	17	17	17	17	17	19	22	22	25	25	25	30	32
J	26	16	16	16	16	17	17	17	25	25	36	36	36	90	90
K	12-1/2	14	14	14	14	19	19	19	24	24	36	36	36	45 Ø	45 Ø
L (PCD)	50	50	50	50	50	70	70	70	102	102	140	140	140	140	140
No. of Holes	4	4	4	4	4	4	4	4	4	4	4	4	4	4	4
Dia of Holes	7	7	7	7	7	9	9	9	11	11	18	18	18	21.5	21.5

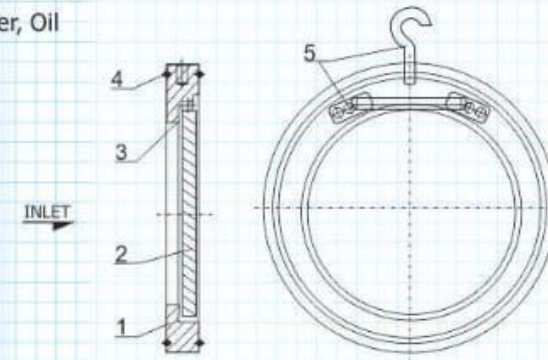
Wafer Check Valves

Features

- Permits flow in one direction and closes automatically if the flow reverses
- Strictly conforming to International Standards
- Available in integrally moulded rubber seating
- Wafer type sleek design to allow maximum flow
- Epoxy coating imparts finish and resistance

Suitability

Water, Oil



HYDRAULIC TEST PRESSURE

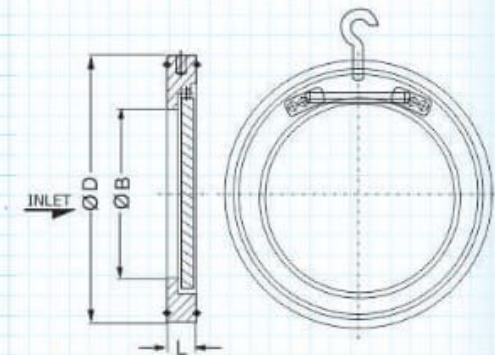
PN 1.0	Body	1.5 Mpa (Gauge)
	Seat	1.0 Mpa (Gauge)
PN 1.6	Body	2.4 Mpa (Gauge)
	Seat	1.6 Mpa (Gauge)

Part No.	Part Name	Material	Specification
1	Body	Cast Iron Ductile Iron Cast Steel	IS 210, FG 200 IS 1865 - 500/7 IS 1030 230-450W
2	Disc	Carbon Steel S. S. Steel	

Part No.	Part Name	Material	Specification
3	Body Seat	Nitrile, EPDM	
4	"O" Ring Gasket		
5	Screws & Hook	Carbon Steel	

MAIN DIMENSIONS mm

Valve Size	L	D	B
25	14	64	14
40	14	86	24
50	14	97	30
65	14	110	42
80	14	129	52
100	18	160	70
125	18	192	98
150	20	218	118
200	22	272	155
250	28	330	200
300	30	383	240
350	32	436	263
400	32.5	486	324
450	34	536	340



Dual Plate Check Valves

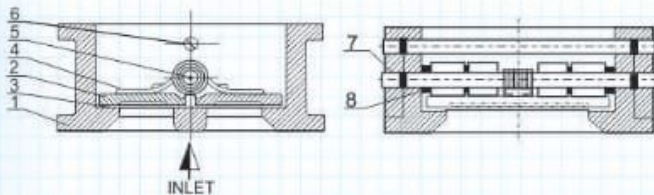
Features

- Permits flow in one direction and closes automatically if the flow reverses
- Strictly conforming to International Standards
- Available in rubber seating
- Wafer type sleek design to allow maximum flow



Suitability

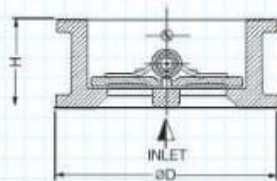
Water, Oil



Part No.	Part Name	Material	Specification	Part No.	Part Name	Material	Specification
1	Body	Cast Iron	IS 210, FG 200	5	Hing Pin	S. S. / Steel	AISI-410 / 304
2	Doors	Ductile Iron Cast Steel	IS 1865-400/15, 450/10 IS 1030-230-450W	6	Stop Pin	S. S. / Steel	AISI-410 / 304
3	Body Seat	Nitrile Rubber EPDM		7	Hing Pin Retainer	S.S. / Carbon Steel	
4	Spring	Spring Steel / S.S.		8	Washers	PTFE	

MAIN DIMENSIONS mm

Valve Size	D	H
40		
50	97	55
65	110	55
80	129	58
100	160	64
125	192	78
150	218	78
200	268	98
250	330	140
300	383	181
350	436	184
400	486	191
450	536	203



HYDRAULIC TEST PRESSURE

PN 1.0	Body	1.5 Mpa (Gauge)
	Seat	1.0 Mpa (Gauge)
PN 1.6	Body	2.4 Mpa (Gauge)
	Seat	1.6 Mpa (Gauge)

Delhi Office :

D-154A, Fateh Nagar, Jail Road,
New Delhi-110018
Ph.: 011-45606986

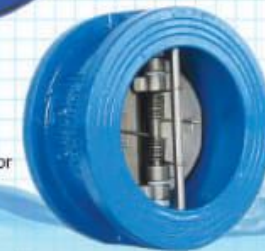
visit us at : www.kartarvalves.com
E-mail : sales@kartarvalves.com



KARTAR
AN ISO 9001 COMPANY



BUTTERFLY VALVES & CHECK VALVES



- 100% Hydrostatically Tested
- Mark Specification IS : 13095 & BS 5155
- 18 months full replacement guarantee against manufacturing defect.
- Available in Stainless Steel Disc & Ductile Iron Disc
- Available in PN 1.0 & PN 1.6
- Available in 40mm to 600mm size
- Available in Hand Lever Type, Gear Type, Pneumatic Actuator, Electric Actuator
- Suitable for numerous application like water, thermal plants, hydel-projects, fire fighting, pumping stations, agriculture, sugar industry, mines etc.

Controlling fluids is our expertise....



Manufactured by :
KARTAR VALVES PVT. LTD.

Jalandhar (India) 144013

